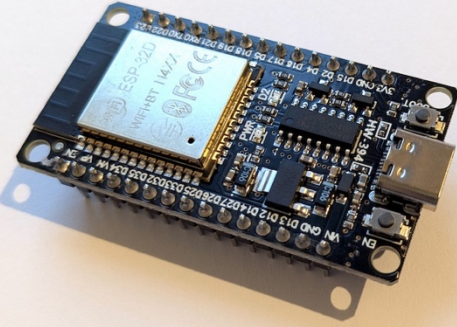
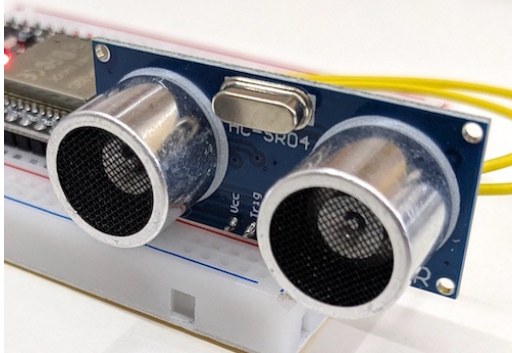
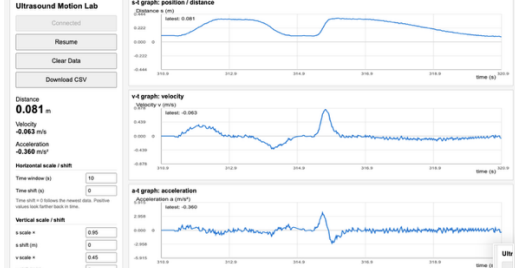


Ultrasound Motion Lab Hardware Setup

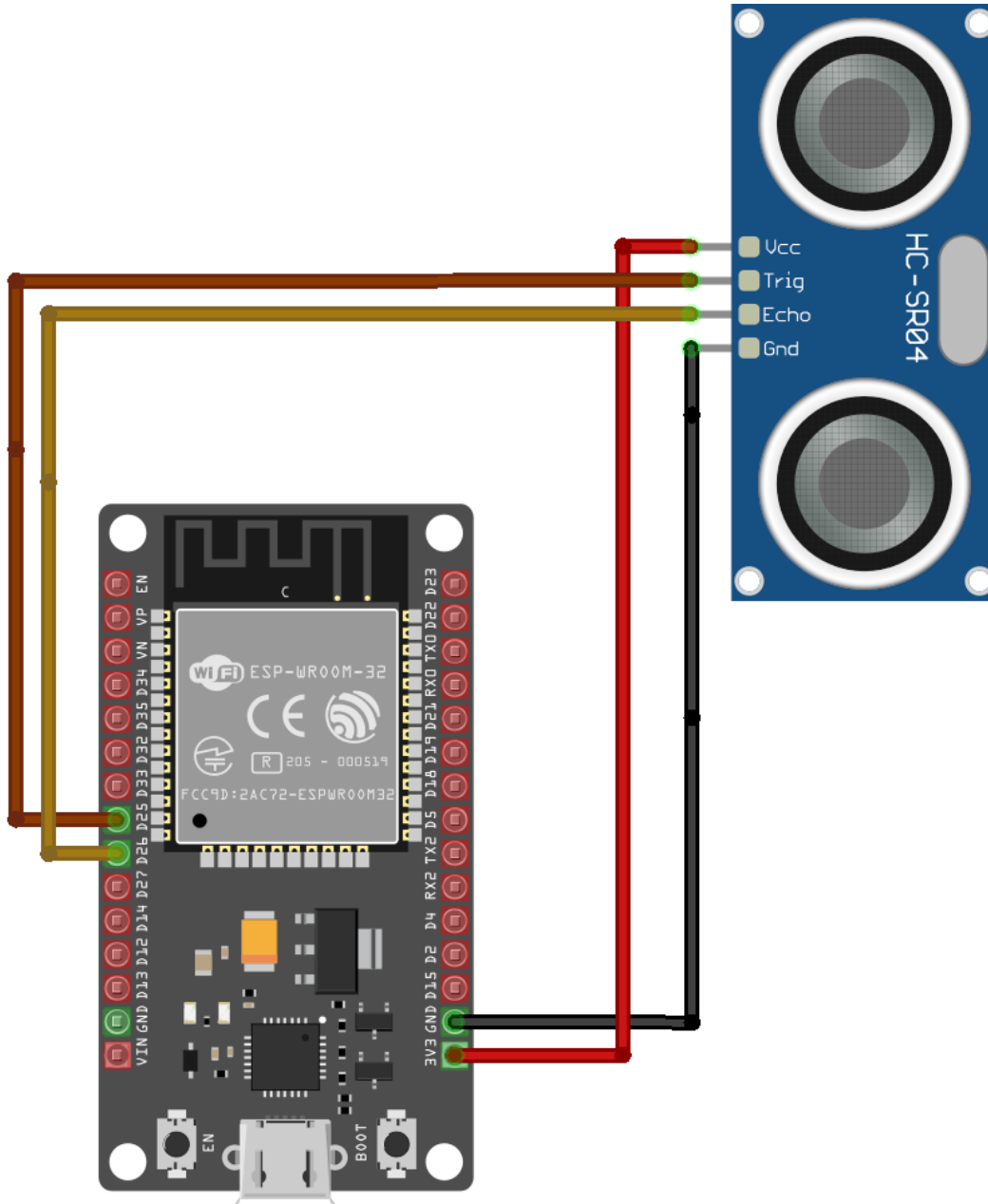
Overview

	<p>ESP32 / ESP32-C3 / Arduino-compatible board</p>	<p>Reads the sensor and sends data over USB serial.</p>	<p>This manual assumes ESP32D</p>
	<p>Ultrasonic distance sensor HC-SR04 (new version)</p>	<p>Measures the distance to the moving object.</p>	<p>Use a 3.3 V compatible module when connecting directly to ESP32 pins.</p>
	<p>Web browser with WebSerial support</p>	<p>Displays the live graphs.</p>	<p>Works best with Chrome or Chromium-based browsers.</p>

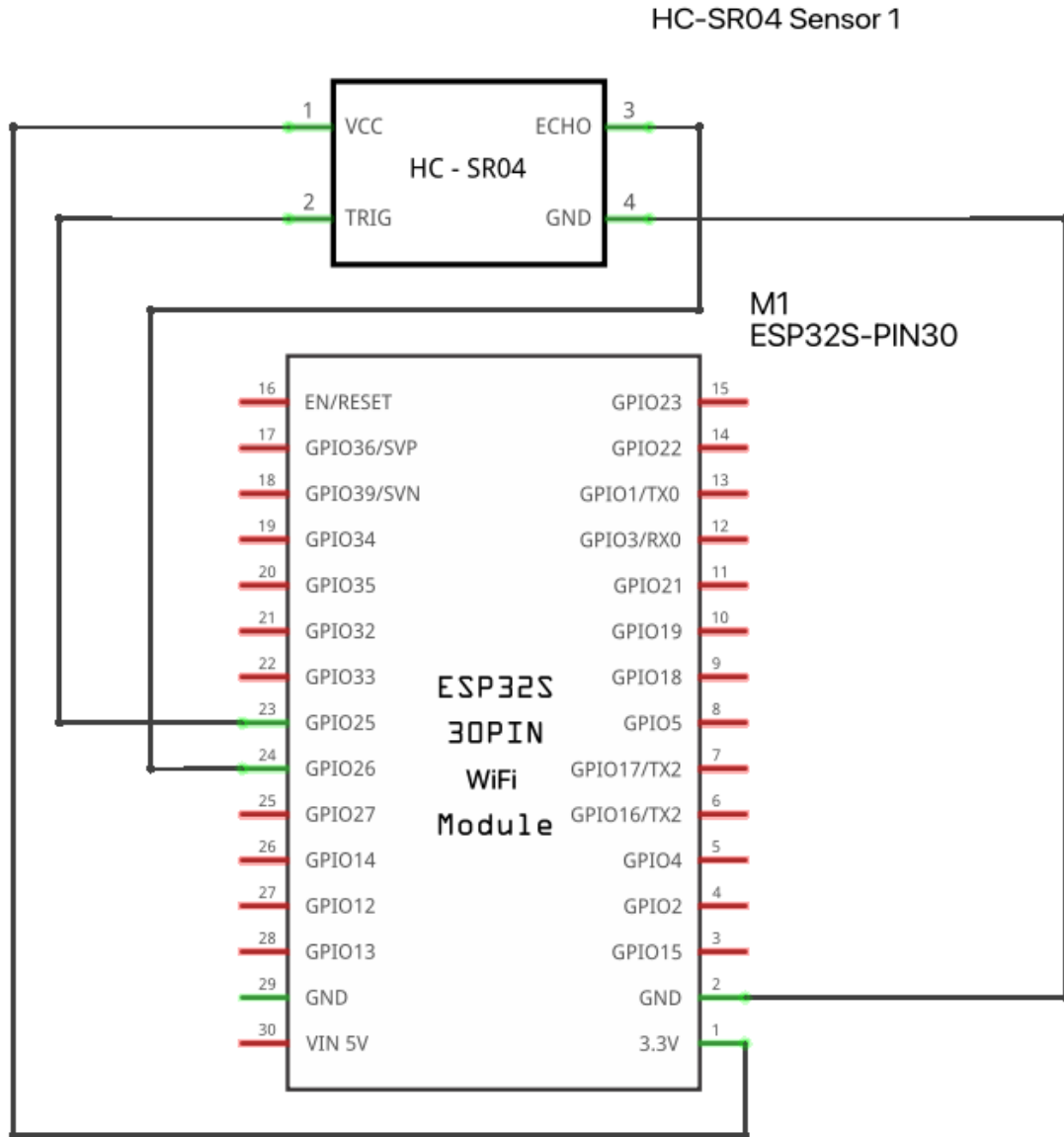
Wiring

- SR04 VCC -> 3.3 V
- SR04 GND -> GND
- SR04 TRIG -> GPIO 25
- SR04 ECHO -> GPIO 26

Diagram and Schema



fritzing



fritzing